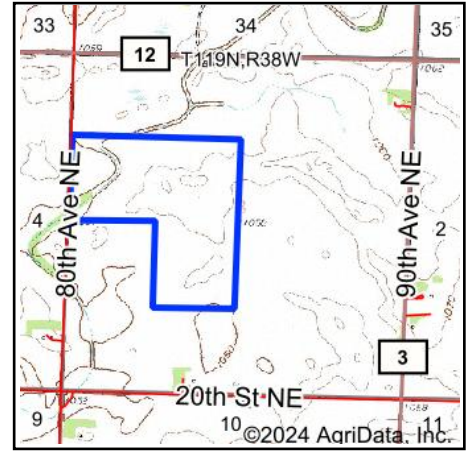
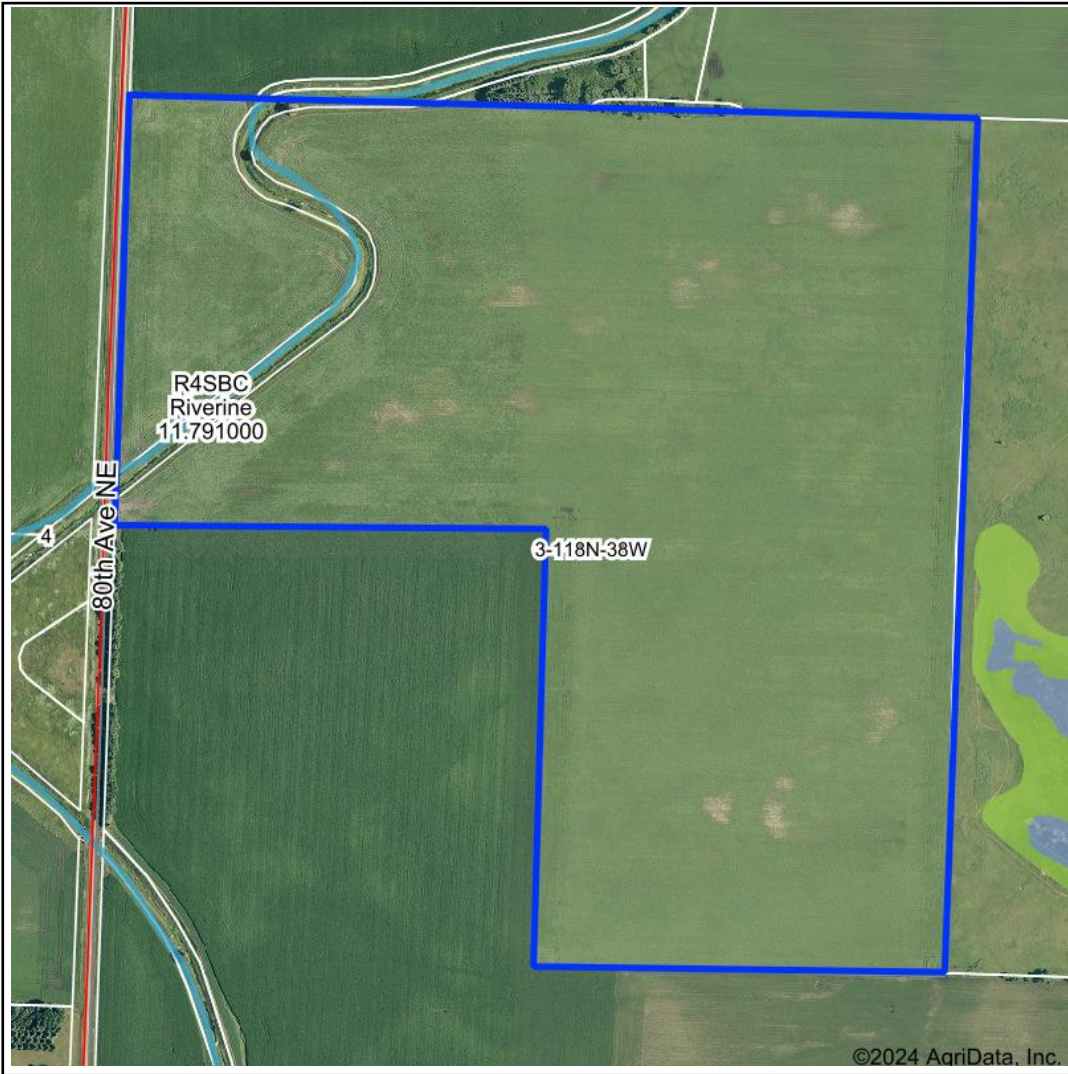


Wetlands Map



State: Minnesota
Location: 3-118N-38W
County: Chippewa
Township: Crate
Date: 12/13/2024



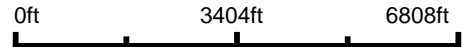
WEISS REALTY
 RENTING & FARMLAND PROPERTIES

Maps Provided By:



© AgriData, Inc. 2023

www.AgriDataInc.com



Classification Code	Type	Acres
R4SBC	Riverine	0.80
Total Acres		0.80

Data Source: National Wetlands Inventory website. U.S. DoI, Fish and Wildlife Service, Washington, D.C. <http://www.fws.gov/wetlands/>