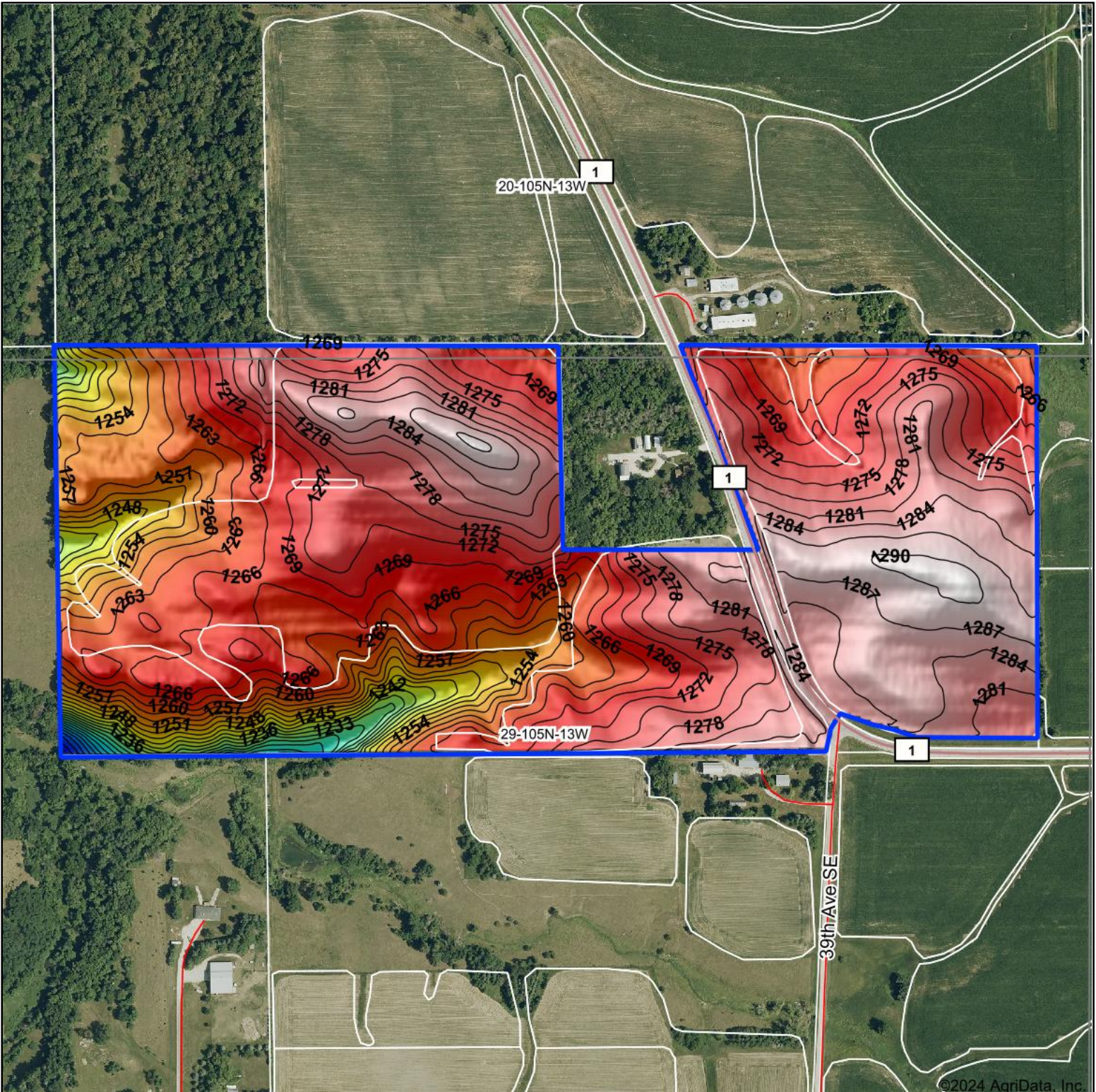


# Topography Hillshade



<p>Low Elevation High</p>	<p>Source: USGS 3 meter dem              Interval(ft): 3              Min: 1,198.8              Max: 1,291.3              Range: 92.5              Average: 1,270.1              Standard Deviation: 12.66 ft</p>	<p>0ft 502ft 1004ft</p> <p>               5/15/2024  <b>29-105N-13W</b>  <b>Olmsted County</b>  <b>Minnesota</b>              Boundary Center: 43° 52' 31.19, -92° 24' 17.87         </p>
---------------------------	---	---