

Hunting Land In Jackson County

Our land (approximately 80 acres) is located 6 miles west of Black River Falls on County Road C. You will find beautiful views of the surrounding area on this fully wooded acreage. White oak and birch trees are plentiful with pines, poplars and other trees. Many, many deer, turkeys, fox and other wild life. About ten years ago I did see a Bobcat.

The cabin was included with the original purchase in 2000. In 2005 we expanded the cabin from 12'x24' to 24'x24'. Very cozy with wood stove and small kitchen. Perfect for a group of hunters, easily sleeps 6. Prewired electrical for plugging in a generator, which gives us power for lights, tv toaster and vacuum cleaner. Being located on a hill gives us excellent reception for those packer games when taking a break from hunting.

All of the neighbors are very friendly and have always allowed retrieving our deer whenever necessary. One time a neighbor brought in his tractor to help us pull out a stuck vehicle. I just can't stress enough how nice the people are around here. Very peaceful and quiet with no trespassers or vandalism of any kind for the twenty years we have owned this fantastic hunting land.

Three survey markers are very easy to find and are located on the NW corner, SW corner and SE corners. Most of the trails were present and we have added a few. We clear all the trails in the fall about a month before the deer gun season so that they can all be driven by a full size 4x4 truck. We have many nice trails that we clear every fall before hunting so, retrieving game is not a big chore with an atv.

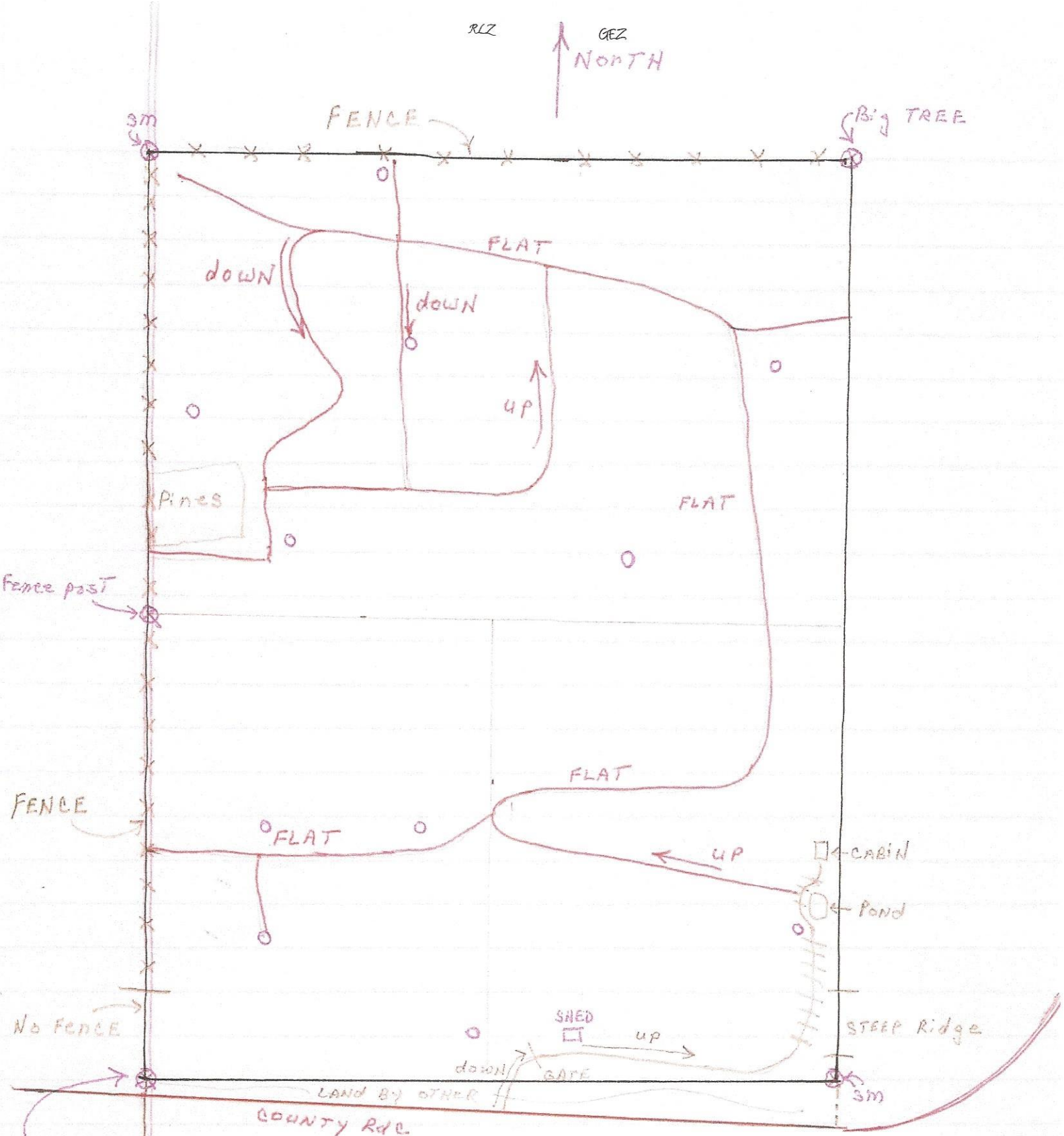
The unimproved entrance drive is from the south off of county Road C. It is a steep grade up the drive which requires a 4 wheel drive vehicle. At the top of the drive, when it turns north to the cabin, the soil is 12" -18" of natural grasses on bedrock. So, under wet conditions, navigating this road is not a problem with a 4x4 vehicle.

We have really enjoyed this little hunting paradise and the fabulous deer hunting we have had with friends and family. The deer are numerous with plenty of bucks typically 8 points or more. We get our deer every year, typically 2 - 5. Going to really miss this place it, but we aren't getting any younger, so it is time to let it go. Hope you enjoy it as much as we have.

RLZ

GEZ

NORTH



Fence post

FENCE

No FENCE

SURVEY MARKERS visible (3)

COUNTY Rd.

LAND BY OTHER

NOT TO SCALE

ALL FENCE BY OTHER OWNERS

TRAILS ———

DEER STANDS ○

SOIL (18") ON bedrock |||||